

Fig. 1. Satellite image of Soná Peninsula in 1990, obtained by composition of Landsat bands TM3, TM4 y TM5



Fig. 2. Satellite image of the region under study. Location of the two forest research permanent plots is shown

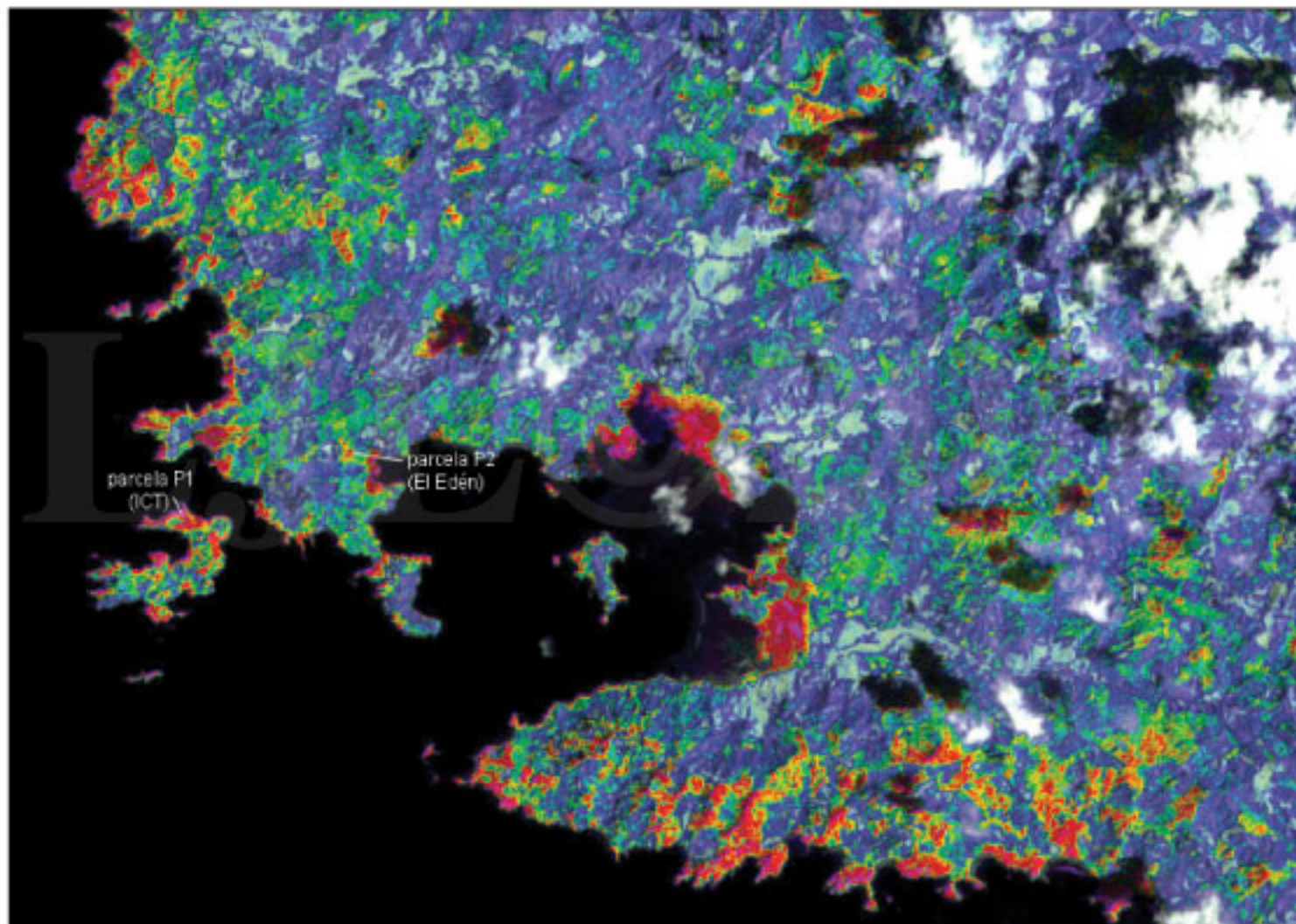


Fig. 3. False colour composite image obtained from Landsat bands TM7, TM5 and TM4 assigned to the blue, green and red. Original image from February 1990

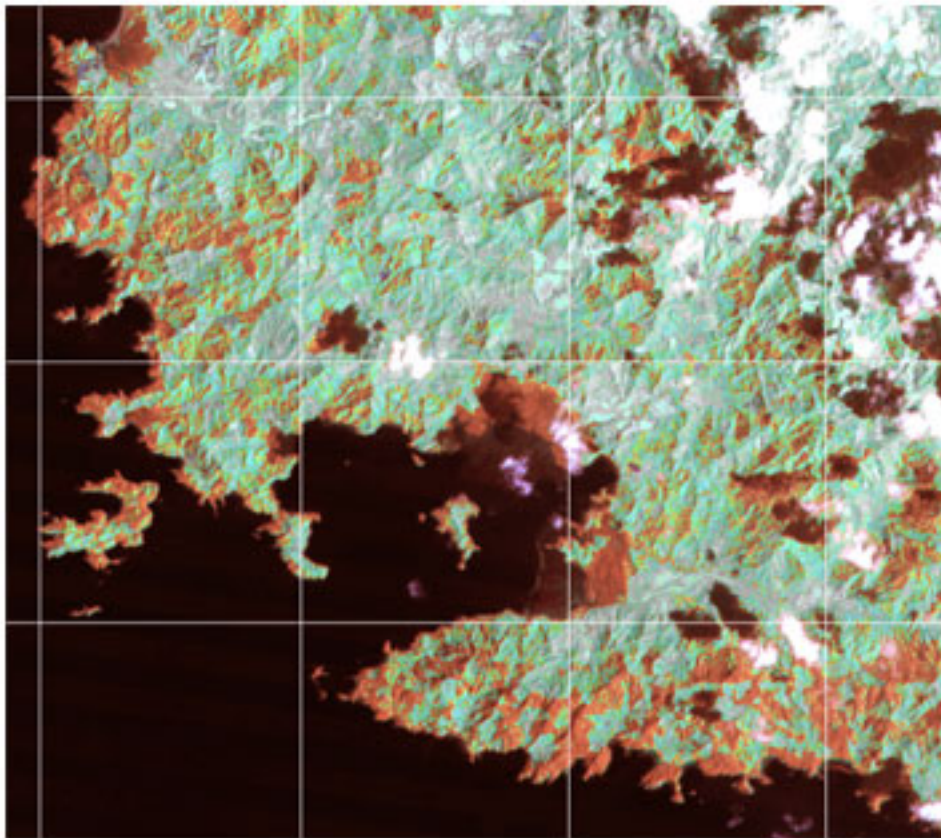


Fig. 4. False colour composite image obtained from Landsat bands TM7, TM5 and TM4 assigned to the blue, green and red. Original image from February 2000

